



HAYWARD
TURNSTILES, INC.

Reliable
& Affordable
Quality



LC 100 Waist High Turnstile



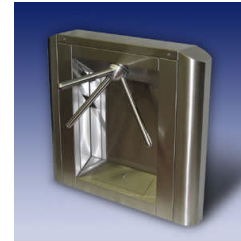
The LC 100 can operate in a fixed location or be supplied as a portable unit with base plate, wheels and guide rail.

MR 100 Waist High Turnstile



The MR 100 cabinet can be supplied in polished stainless steel or a tough wear resistant powder coated steel.

MR 200 Waist High Turnstile



The MR 200 has many applications; ideal for system integration with proximity card readers or biometrics.

All the above products offer the following features and benefits:

- **Lo/No Maintenance** – our turnstile mechanism has been designed to virtually eliminate maintenance. This means little or no downtime, and no costly maintenance calls.
- **Style** – the Hayward products have sleek clean lines to complement almost any surroundings.
- **Quality** – every aspect of design, manufacture and assembly is strictly controlled for quality.
- **Smooth operation** and accurate control built into all our turnstiles comes from our precision mechanism designed to the standards required in mass transit application.
- **Interface** - electronic or serial interfaces are available.
- **Integration** – our design facilitates integration with existing or new access control systems.
- **Low cost of ownership** low cost of ownership comes through design quality, **Lo/No** maintenance and competitive pricing.
- **Control** -the passage can be electrically controlled in one or both directions.

OT 100/200 Optical Turnstile



- **Style** – the OT 100 has sleek clean lines to complement most architectural surroundings.
- **Appearance** – a polished granite top and stainless steel cabinet are standard; however, the materials and finish may be customized to complement most architectural surroundings.
- **Quality** – every aspect of design, manufacture and assembly is strictly controlled for quality.
- **Card Reader** – a card reader may be mounted above or below the granite top with the target card read area clearly marked.
- **Interface** – electronic dry contact, or serial communication interfaces are available.

SG 400 Swing gate



- **Style** – the SG 400 has sleek clean lines to complement most architectural surroundings.
- **Quality** – every aspect of manufacture, welding, assembly and finish, is strictly controlled for quality.
- **Smooth operation** and accurate closing comes from quality design and precision engineered self-closing hinges.
- **Interface** - electronic lock or standard self-closing hinge mechanisms are available.
- **Integration** – the design facilitates integration with existing or new access control systems.

Visit us at www.haywardturnstiles.com to download our **FREE** turnstile guide