



J A V E L I N

desktop card printers



Javelin™ Professional-line Printers

High performing & reliable full color desktop card printers for either single or dual-sided printing solutions

Javelin Professional-line printers are part of the latest generation of NBS's most popular card printer family. Designed and built for demanding environments, the Javelin Professional-line printers deliver reliability and performance for high-volume card production in either single or dual-sided, monochrome or full color printing situations. Expansion options for networking and card encoding give the Professional-line printers the flexibility to meet your specific requirements.

Ideal for:

- Employee ID cards
- Student & faculty ID cards
- Access control cards
- Gift cards
- Financial cards
- Visitor ID cards
- Personalized membership cards
- Loyalty cards
- Government Licenses
- ... and more!



High Performance

- Vibrant, true-to-life colors
- High volume card throughput
- Large capacity card feeder available
- Rugged metal enclosed (J360i)

Innovative and Easy-to-Use

- Easy plug and play USB or USB with Ethernet interface simplifies configuration
- Printhead bracket opens wide for easy ribbon access
- 16 character LCD screen for printer status and error reporting messages
- Ribbon image counter and ribbon-low notification
- Reject bin holds cards that fail to encode correctly (J430i)

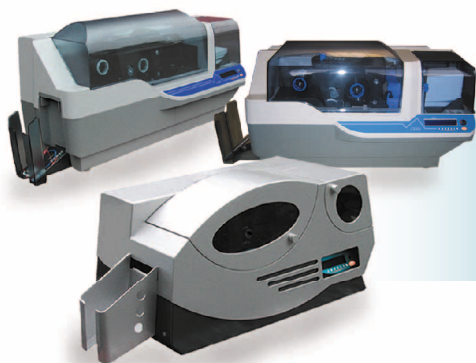
Reliable and Flexible

- Print dual-sided or single-sided
- Revolutionary angled card feeder design means fewer mis-fed cards
- Self-aligning printhead design for consistently uniform print quality

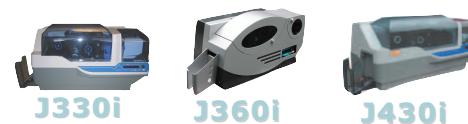
Encoding and Network Connectivity Options

- 3 track magnetic stripe encoding (HiCo/LoCo)
- Contact and contactless smart card encoding capabilities
- Built-in 10/100 Ethernet for printer networking simplifies device management and eliminates the need for third party external device
- Unique "JX" features

**... big performance
at an affordable price ...**



Javelin™ Professional-line Printers at a glance



Legend: ● = standard features ○ = optional features

	J330i	J360i	J430i
Color printing	●	●	●
Monochrome printing	●	●	●
Single-side printing	●	●	●
Dual-side printing			●
Rugged metal case		●	
Card input hopper (100 cards)	●	●	●
Card input hopper (200 / 220 cards)	○	●	○
Card output hopper (100 cards)	●	●	●
Card thicknesses supported: 10 - 60 mil	●	●	●
USB interface	●	●	●
USB & Ethernet interface	○	○	○
16-character LCD display	●	●	●
Magnetic stripe encoding (3-track HiCo / LoCo)	○	○	○
Contact smart card personalization	○	○	○
Contactless smart card personalization	○	○	○
Reject bin for incorrectly encoded cards			●
Javelin5: Intuitive ID Card software	○	○	○
JX: Upgrade for additional features	○	○	○
Xpressi: financial EMV software solution for distributed branch issuance	○	○	○



UPGRADE TO JAVELIN "JX"™ AND GET MORE FEATURES

For even more enhanced capabilities, consider upgrading your Javelin printer to JX status. With the integration of our optional JX board, Javelin printers can operate as a true network printer without a dedicated PC and provide a range of other unique performance and security options.



ADD JAVELIN5™ INTUITIVE CARD DESIGN SOFTWARE

Javelin5 is a multifunctional software application that offers easy and flexible features to manage any card design and printing need. From the back office card production to the low-end personalization solution, Javelin5 offers the easy-to-use solution with total control of your options.



EMV BRANCH ISSUANCE SOFTWARE

Couple your Javelin with Xpressi™ software for an EMV branch card issuance solution that is cost-effective and easy to implement. Supporting multiple EMV configurations, chip types and even printer brands with one system, this solution gives an issuer the flexibility to keep their future expansion and operation options open for change.

For further detail on any of the above products, please consult the corresponding NBS brochure.

GENERAL SPECIFICATIONS

- 16-character LCD display
- Windows® drivers for XP, Vista, 2000 & Server 2003
- Bi-directional driver communication
- 4MB image memory standard
- Up to three (3) year printer warranty
- Up to two (2) year (unlimited passes) print head warranty

PRINTING

- Color dye sublimation or monochrome thermal transfer printing
- 300 dpi (11.8 dots/mm) print resolution
- Full color single-side: 144 cph (J330i/J360i); 130 cph (J430i)
- Full color face, black reverse: 102 cph (J430i)
- Monochrome: 700 cph

BAR CODES

- Code 39, Code 128 B & C with & without check digit
- 2 of 5 & 2 of 5 Interleaved
- UPC-A, EAN 8 & EAN 13
- PDF-417 2D bar code and other symbologies can be printed via Windows drivers

CARD SPECIFICATIONS

- Types: PVC, PVC Composite, Adhesive backed
- Card width/length: ISO CR-80-ISO 7810, 2.12" (54mm) x 3.38" (86mm)
- Magnetic Stripe-ISO 7811
- Smart Card: contact and contactless
- Card thickness: 10 mil (.25mm) to 60 mil (1.524mm) (+/- 10%)
- Card feeder capacity: 100 cards (30 mil)
- Card output hopper capacity: 100 cards (30 mil)

COMMUNICATIONS INTERFACE

- USB 1.1 (USB 2.0 compatible) cable included
- Optional Built-in 10/100 Mbps Ethernet

RIBBON SPECIFICATIONS

Javelin i-series printers require the use of Javelin encoded i-series ribbons for full color printing

- YMCKOK: 170 cards/roll (J430i only)
- YMCKO: 200 & 330 cards/roll
- 1/2 Panel YMC Full KO: 450 cards/roll
- KdO: 500 cards/roll
- KrO: 500 cards/roll
- Overlay varnishes: Clear and Hologram: 350 cards/roll
- Monochrome: Black 1000 & 1500 cards/roll
- Monochrome: 1000 cards/roll: blue, red, green, silver, gold, white and scratch-off gray (840 cards/roll)

MECHANICAL

- J330i** • Width: 18.2 in (462mm)
• Depth: 9.4 in (239mm)
• Height: 10.1 in (256mm)
• Weight: 15.5 lbs (7.0kg)
- J360i** • Width: 18.2 in (462mm)
• Depth: 8.2 in (208mm)
• Height: 9.7 in (246mm)
• Weight: 28 lbs (12.9kg)
- J430i** • Width: 26 in (660mm)
• Depth: 9.4 in (239mm)
• Height: 10.1 in (256mm)
• Weight: 20 lbs (9.1kg)

ELECTRICAL

- 110 ~ 240 Volts AC, 50 ~ 60 Hz (auto switching)
- FCC Class A, CE, UL and CUL approved

ENVIRONMENTAL

- Operating Temperature: 60°F to 86°F (15°C to 30°C)
- Operating Humidity: 20% to 65% non-condensing
- Storage Temperature: 23°F to 158°F (-5°C to 70°C)
- Storage Humidity: 20% to 70% non-condensing
- Ventilation: Free air

OPTIONS

- Built-in 10/100 Mbps Ethernet
- Smart card personalization: contact and contactless (30 mil cards only)
- Magnetic encoder (30 mil cards only) 3 track HiCo/LoCo
- High capacity feeder for J330i/J430i (220 cards)
- Cleaning supplies

Genuine NBS Supplies
Your choice of card printer supplies is critical. It is a primary factor affecting the reliability and consistency of printing. Genuine Javelin Supplies meet stringent quality standards and are tested for optimum performance with Javelin card printers.

true COLOURS™
Always use TrueColours™ certified media from NBS Technologies



Website: www.nbstech.com
Email: info@nbstech.com

Corporate Headquarters
Canada
703 Evans Avenue
Toronto, Ontario
M9C 5E9
Canada
tel: +1 416.621.1911
fax: +1 416.621.8875

Contact your nearest NBS location for more information on Javelin card printers & consumables:

Europe, Middle East, Africa
B1 Moorfield Point
Slyfield Industrial Park
Guildford, Surrey GU1 1RU
United Kingdom
tel: +44 (0)1483 563200
fax: +44 (0)1483 511189

North / South America
10925 Bren Road E
Minneapolis, MN 55343
USA
tel: +1 416.840.8620
fax: +1 952.912.9439

Asia Pacific
PO Box 780
Hurstville BC
NSW 1481
Australia
tel: +61 (2) 9546 6841
fax: +61 (2) 9546 6851

©Feb 2009 NBS Technologies Inc. Specifications are subject to change without notice. All rights reserved. NBS and the NBS logo are registered trademarks of NBS Technologies Inc. in the United States and Canada and are trademarks in other countries. Javelin & the Javelin logo are registered trademarks of NBS Technologies Limited in the United States and European Union and are trademarks in other countries. Javelin JX, Javelin JX design, Javelin5 & the Javelin5 design are trademarks of NBS Technologies Inc. All other brand and product names are the trademarks or registered trademarks of their respective holders.